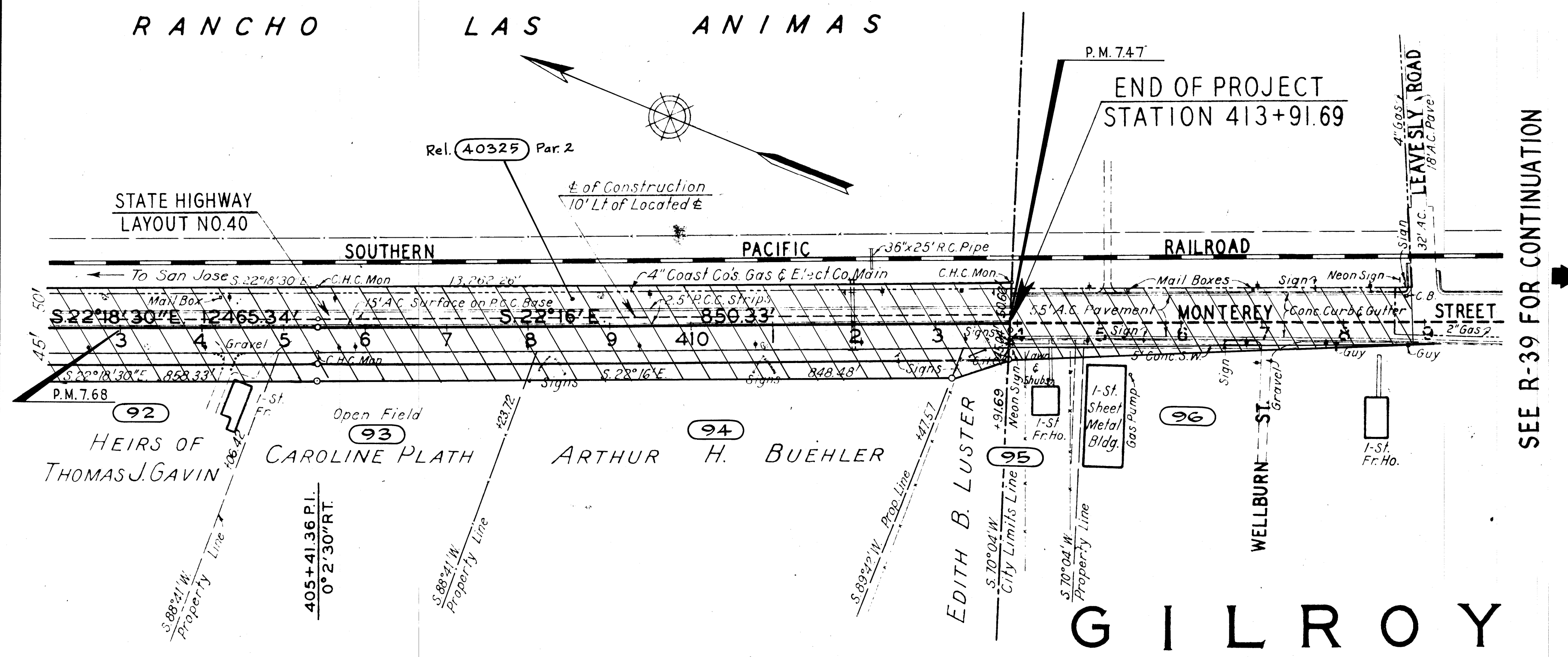
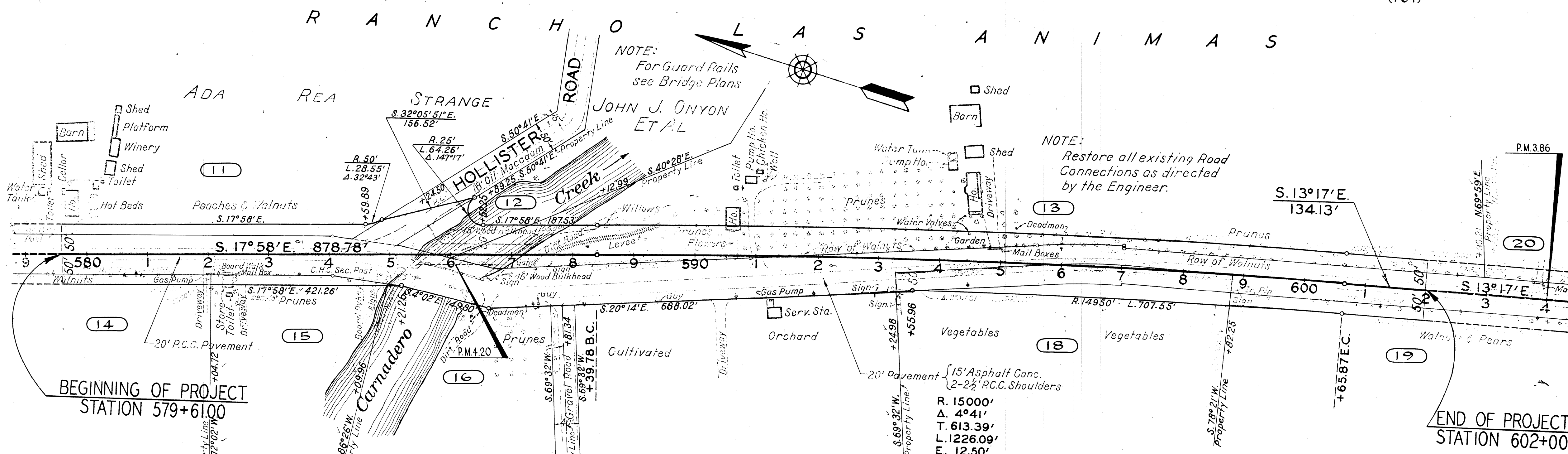


No.	Grantor	Area Acquired (A.C.F.)	Type	Recordation	Remarks	
		Total	Deed	Date	Book	Page
9.2	Heirs of Thomas J. Gavin	0.259	F	7-21-14	1054	172
9.3	Caroline Plath	0.109	F	7-23-40	1016	278
9.4	Arthur H. Buehler et ux	0.185	F	7-23-40	1018	232
9.5	Edith B. Leonard	0.064	F	11-6-42	1070	593
9.6	Albert G. Gurrilas et ux	0.062	F	10-15-44	1064	198
40325	State to the City of Gilroy		Rel.	6-3-75	443	299
					Par. 2	



SEE R-39 FOR CONTINUATION

No.	Grantor	Area Acquired (A.C.F.)	Type	Recordation	Remarks	
		Total	Deed	Date	Book	Page
11	Ada Rea Strange	0.11	F	15-18-31	566	354
12	John J. Onyon et al	0.19	F	3-10-31	246	539
13	Brano Filice et al	1.17	F	3-21-31	246	539
14	Giuseppe Filice	0.68	F	3-10-31	246	539
15	Giuseppe L. Lillard	0.10	F	3-10-31	246	539
16	Giuseppe Barbari et ux	0.004	F	3-10-31	246	539
17	M. E. Thoms	1.38	F	8-1-31	581	200
18	G. Filice	0.12	F	3-10-31	555	537
20	Gennaro F. Filice et ux	0.12	F	3-21-31	562	208



See R-39.5
RIGHT-OF-WAY RECORD MAP
 SCALE: 1"=100'
 R-504.24

R504026